

Fitting rear wheel arch liners

Tools

Wheel brace
Small flat blade screw driver or scribe
Torx 20, 25 adapter
Waxoyl
Stanley knife
Marker pen

Parts

1 x 1S0 810 971	Wheel housing liner plastic left rear.
1 x 1S0 810 972	Wheel housing liner plastic right rear
1 x 1S0 810 987 9B9	Adapter rear lower wheel arch (LHSR)
1 x 1S0 810 988 9B9	Adapter rear lower wheel arch (RHSR)
4 x N 106 213 01	Expanding nut 5 x 13,2
6 x N 908 338 01	Expanding nut 4,8
14 x N 909 747 01	Hex socket head panel bolt

What to do

- 1) Remove rear wheels
- 2) Remove Adapter at the front of the rear wheel arches. Two screws inside the arch and one underneath (circled).

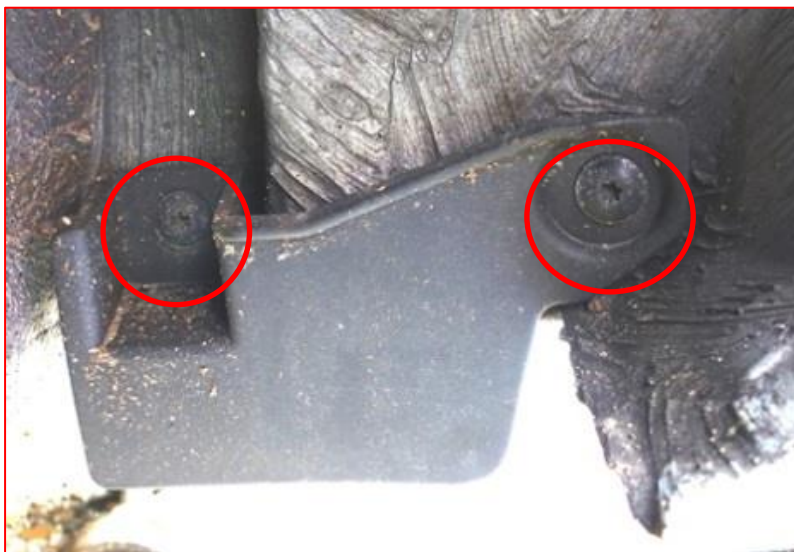


Figure 1 adapter screw on screws inside rear arch



Figure 2 Adapter screws underside of body

This is only a rough guide and I take no responsibility for anyone else fitting the liners and any damage caused. (V1.0A)



Figure 3 Adapter screw on underside of chassis

screws inside rear arch

3) Fit new adapters



Figure 5 New adapter screw in place using the existing screws



Figure 4 New adapter screw in the same position as before



Figure 6 Liner front edge fits into adapter slot and is screwed in position

This is only a rough guide and I take no responsibility for anyone else fitting the liners and any damage caused. (V1.0A)

- 5) Offer up the liner and locate temporarily into the adapter slot. Line up the inner liner edge with the bottom of the chassis and mark the position of the 5 holes with a marker pen (three on the inner edge and two on the outer edge near the top).
- 6) Using a screwdriver or scribe search around the hole markings for the 5 hole covers. I sprayed the holes with waxoyl prior to fitting the inserts.



Figure 7 location of the inner arch chassis holes



Figure 8 Inner arch chassis holes with 3 screw inserts N908 338 01 fitted each side

- 8) Fit the 2 outer arch holes with the N 106 213 01 fittings



Figure 9 Outer arch chassis hole with screw inserts N 106 213 01 fitted

This is only a rough guide and I take no responsibility for anyone else fitting the liners and any damage caused. (V1.0A)

- 9) Fit the liner in place using the adapter in figure 6 as a starting point. Screw in the N 909 747 01 torx screws
- 10) As I had fitted rear mud flaps I needed to modify the liner so it clamped between the mud flap and the mud flap mounting clip.



Figure 12 Liner showing area to trim



Figure 11 Area to trim for mud flap fitting



Figure 10 Liner fitted between mud flap and mud flap clip

- 11) Remove the small torx screw from the rear bumper/chassis fitting and place the liner over the bottom. Screw in one of the Torx screws for the liner N 909 747 01 torx.



Figure 13 Rear liner fitting to existing bodywork

This is only a rough guide and I take no responsibility for anyone else fitting the liners and any damage caused. (V1.0A)